

# MAXIMATOR®

## Maximum Pressure.



High Pressure Technology • Testing Equipment  
Hydraulics • Pneumatics

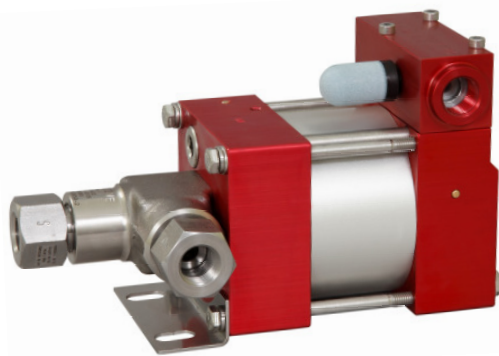
### Technical Data Sheet

M37 (L)

» Oil service

M37 (L) VE

» Water service



M37 (L)  
single acting, single air drive head  
(Standard= Bottom inlet)

#### Technical Data:

Air drive pressure:	1-10 bar / 14,5 - 145psi
Calculated Outlet Pressure at an air drive of 10 bar/145 psi:	460 bar/ 6,670 psi
Pressure ratio:	1:46
Displacement volume/double stroke	2.8 cm <sup>3</sup> / 0.17 cu.inch

#### Connections:

Inlet:	Standard: Bottom Inlet 3/8 BSP
Outlet:	3/8 BSP
Air drive:	3/8 BSP
Maximum operating temperature:	60°C
Net weight:	2.8 kg

Pressure and flow performances, please see enclosed graph.

#### Wetted materials of construction:

Seal package:	M37(L): Polyurethan, NBR M37(L)VE: UHMWPE, FKM
Pump Body:	1.4305
Piston:	1.4112 (hardened)
Fittings:	1.4104

#### Approximate Dimensions:

Height:	195 mm
Depth:	104 mm
Width:	112 mm

#### Available Options:

Seal material for oil service:	M37(L)
Seal material for water service:	M37(L)VE
Side inlet	M37(L)S/ M37(L)VES
Hand lever/ Spring return	M37-HL (only available with seal package Polyurethane, NBR)
External pilot port modification	M37(L)-DIR
Special inlet and outlet ports, i.e. NPT	M37(L)-NPT M37(L)VE-NPT
Special seal material to handle special fluids on request.	

#### Available Accessories:

Air control units for M series with filter pressure regulator, control pressure gauge and shut off valve: M37(L) with C1

To protect the pump against excessive outlet pressures or to limit the outlet pressure, a safety valve M37(L) with C1/SVair (The required outlet pressure has to be indicated.) can be fitted to the air control unit in the air drive line:

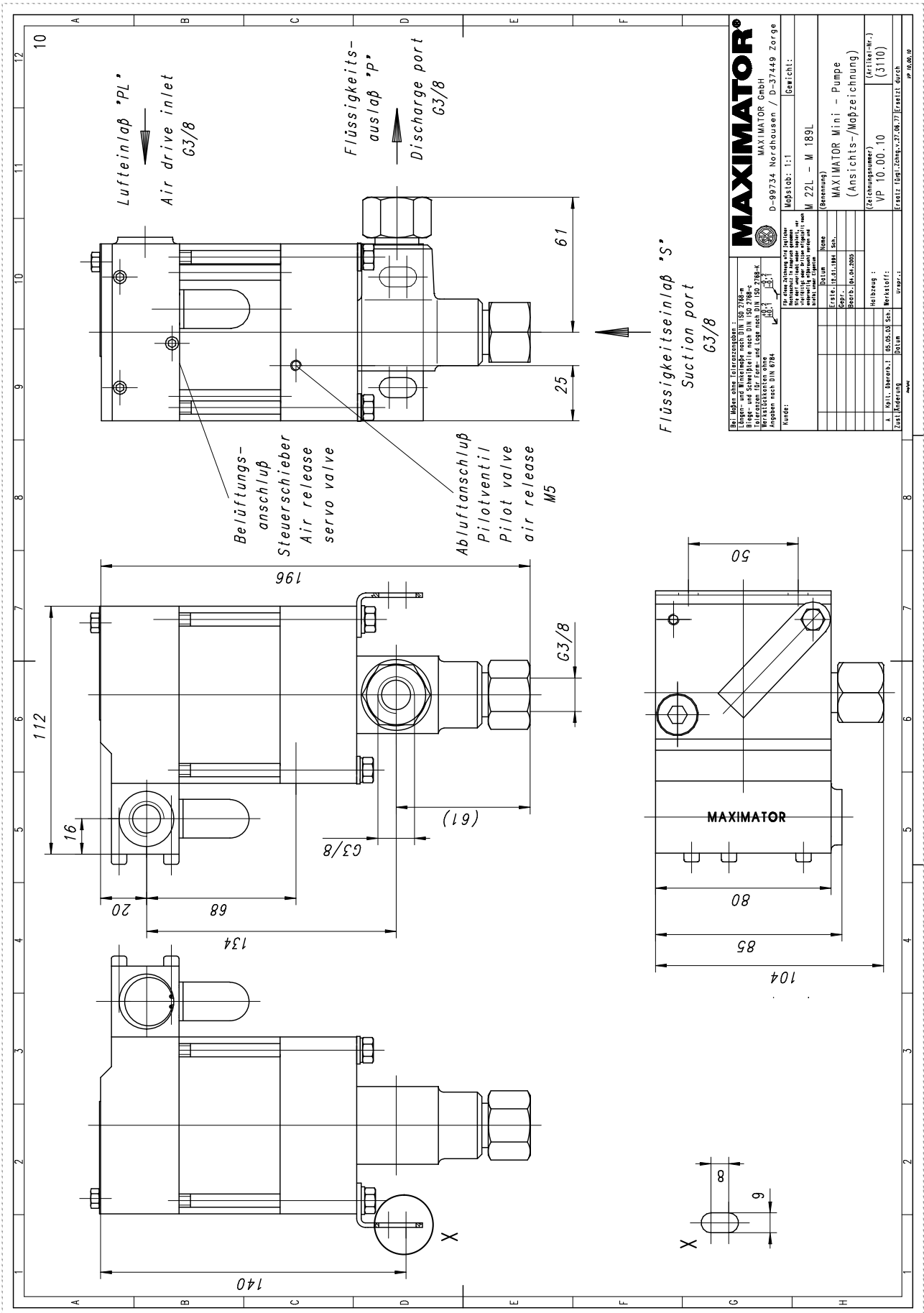
**Please consult factory for more information.** All technical and dimensional information subject to change. All General Terms and Conditions of sale, including limitations of our liability, apply to all products and services sold.

# MAXIMATOR®

## Maximum Pressure.



High Pressure Technology • Testing Equipment  
Hydraulics • Pneumatics





High Pressure Technology • Testing Equipment  
Hydraulics • Pneumatics

### Leistungsdiagramm/Performance Graph M(O)(SF) 37

Prüfflüssigkeit/Test Liquid: Wasser-Öl-Emulsion/Water Oil Emulsion ca. 1 - 10 cst

