

# MAXIMATOR®

## Maximum Pressure.

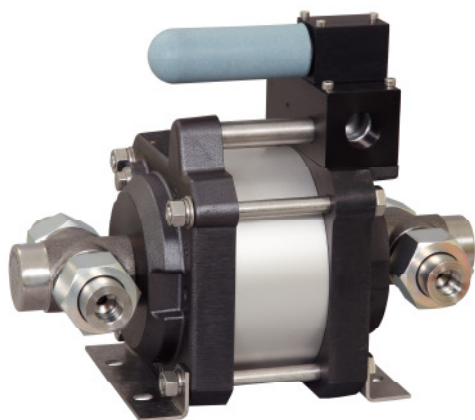


High Pressure Technology • Testing Equipment  
Hydraulics • Pneumatics

### Technical Data Sheet

G500DS

» Oil and water service



G500DS  
double acting, single air drive head, side inlet  
(Bottom inlet not available)

#### Technical Data:

Air drive pressure:	1-10 bar / 14,5 - 145psi
Calculated Outlet Pressure at an air drive of 10 bar/145 psi:	4,500 bar/ 65,250 psi
Pressure ratio:	1:519
Displacement volume/double stroke	3.8 cm <sup>3</sup> / 0.24 cu.inch

#### Connections:

Inlet:	1/4 BSP
Outlet:	9/16-18UNF
Air drive:	3/4 BSP
Maximum operating temperature:	60°C
Net weight:	To be added

Pressure and flow performances, please see enclosed graph.

#### Wetted materials of construction:

Seal package:	G500DS: Polyurethan, NBR
Pump Body:	1.4313
Piston:	1.4112 (hardened)
Fittings:	17-4-PH

#### Approximate Dimensions:

Height:	544 mm
Depth:	183 mm
Width:	272 mm

#### Available Options:

Special inlet ports, i.e. NPT	G500DS-NPT
Special seal material to handle special fluids on request.	

#### Available Accessories:

Air control units with filter pressure regulator, control pressure gauge and shut off valve:	G500DS with C2
To protect the pump against excessive outlet pressures or to limit the outlet pressure, a safety valve can be fitted to the air control unit in the air drive line:	G500DS with C2/SVair (The required outlet pressure has to be indicated.)

**Please consult factory for more information.** All technical and dimensional information subject to change. All General Terms and Conditions of sale, including limitations of our liability, apply to all products and services sold.

# MAXIMATOR®

## Maximum Pressure.



High Pressure Technology • Testing Equipment  
Hydraulics • Pneumatics

