

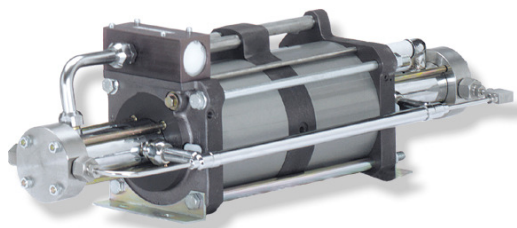
MAXIMATOR®

Maximum Pressure.



High Pressure Technology • Testing Equipment
Hydraulics • Pneumatics

Technical Data Sheet



DLE 5-30-2
single acting, double air drive head
two stages

Gas booster DLE 5-30-2

Technical Data:

Air drive pressure pL:	1-10 bar / 14,5 - 145psi
Pressure ratio i:	1:10 / 1:60
Compression ratio	1:90
Stage pressure ratio:	1:6
Minimum suction pressure pA:	2 bar
Maximum suction pressure pA:	1* air drive pressure pL
Maximum outlet pressure pB:	600 bar
Displacement volume/double stroke:	373 cm ³
Maximum cycles:	100 / min
Stall pressure:	PB = 60* pL + 60/10*pA

Standard Connections:

Air drive:	3/4 BSP
DLE 5-30-2 (-GG)	Inlet/Outlet: 1/2 BSP 1/4BSP
Maximum operating temperature	100°C
Net weight:	24 kg

Pressure and flow performances, please see enclosed graph.

Materials of construction hp section DLE 5-30-2:

Standard seal package:	PTFE, Viton
Compressor head:	Aluminium anodised / 1.4305
HP cylinder:	Alu hardcoated/1.4542
HP piston:	1.4304
Fittings:	1.4305
Balls:	1.4034
Springs:	1.4310

Approximate Dimensions:

Length:	788 mm
Width:	181 mm
Height:	233 mm

Available Options:

Inert gas service (standard)	DLE 5-30-2 (-GG)
Oxygen service:	DLE 5-30-2-GG-S
CO ₂ service:	DLE 5-30-2-GG-C
In-/Outlet: 9/16-18UNF	DLE 5-30-2-GU
In-/Outlet: 1/4NPT	DLE 5-30-2-NN

Available Accessories:

Air control units with filter pressure regulator, control pressure gauge and shut off valve:	DLE 15-30-2 with C2
To protect the booster against excessive outlet pressures or to limit the outlet pressure, a safety valve can be fitted to the air control unit in the air drive line:	DLE 15-30-2 with C2/SVair (The required outlet pressure has to be indicated.)

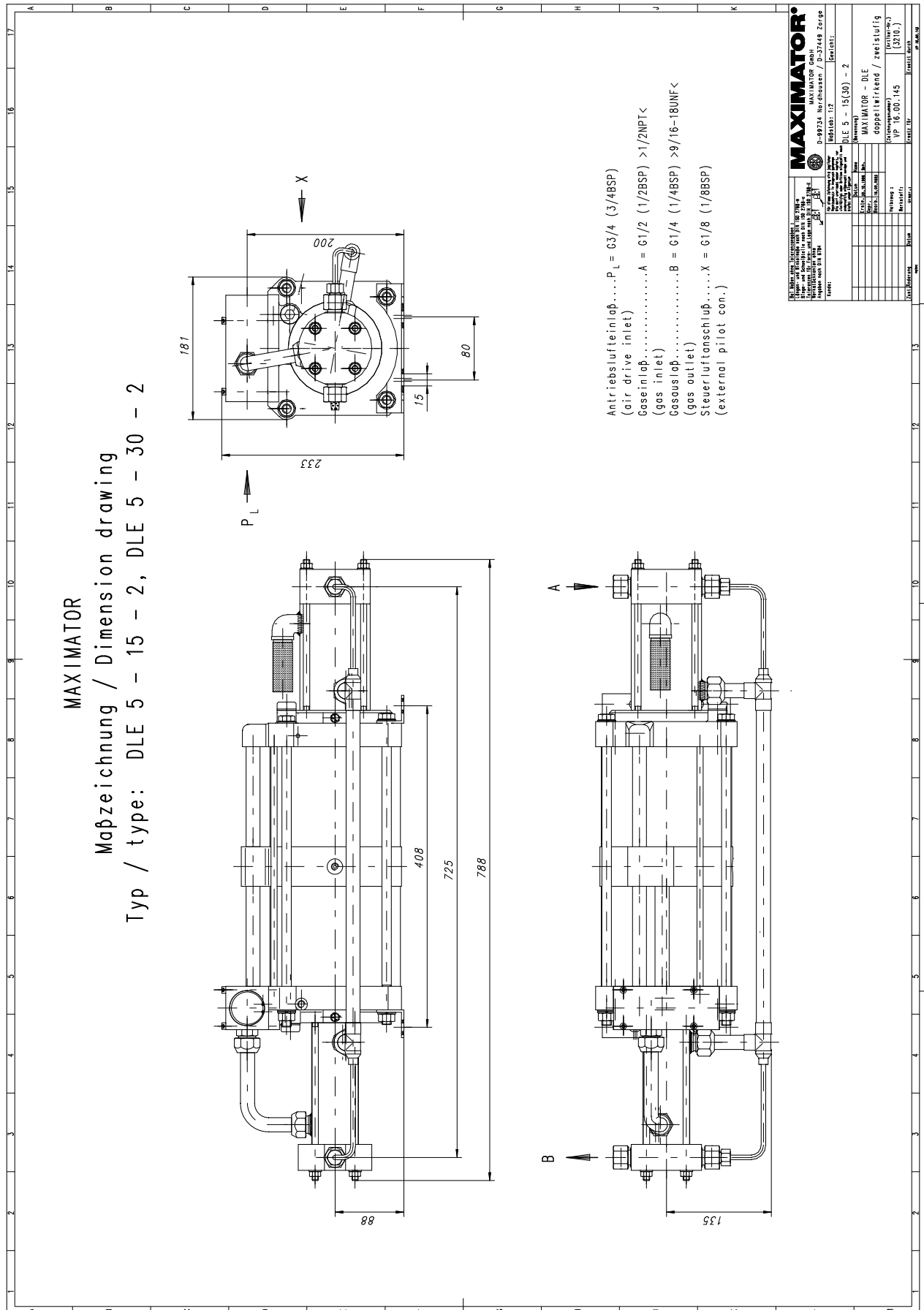
Please consult factory for more information. All technical and dimensional information subject to change. All General Terms and Conditions of sale, including limitations of our liability, apply to all products and services sold.

MAXIMATOR®

Maximum Pressure.



High Pressure Technology • Testing Equipment
Hydraulics • Pneumatics



MAXIMATOR®

Maximum Pressure.



High Pressure Technology • Testing Equipment
Hydraulics • Pneumatics

